

PROJECT

2016 - CBO KOLMONT WELLEN

DORPSSTRAAT - OVERBROEKSTRAAT

VERKOOPSPLANNEN - UNIT 2

DATUM

DONDERDAG 18 DECEMBER 2025

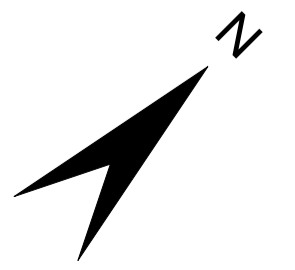
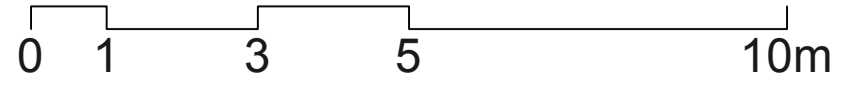
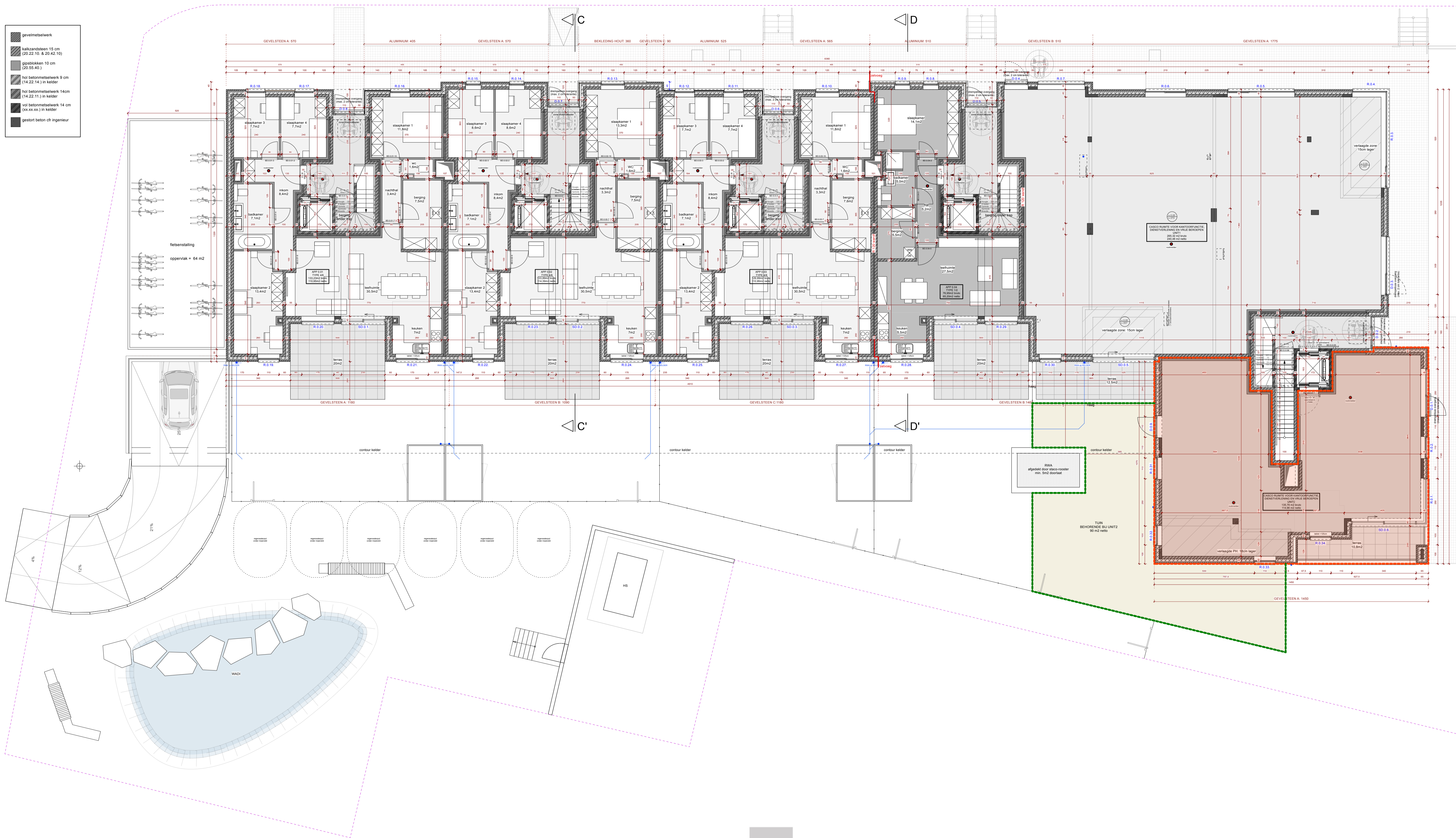


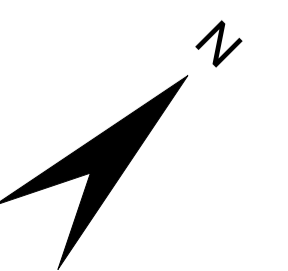
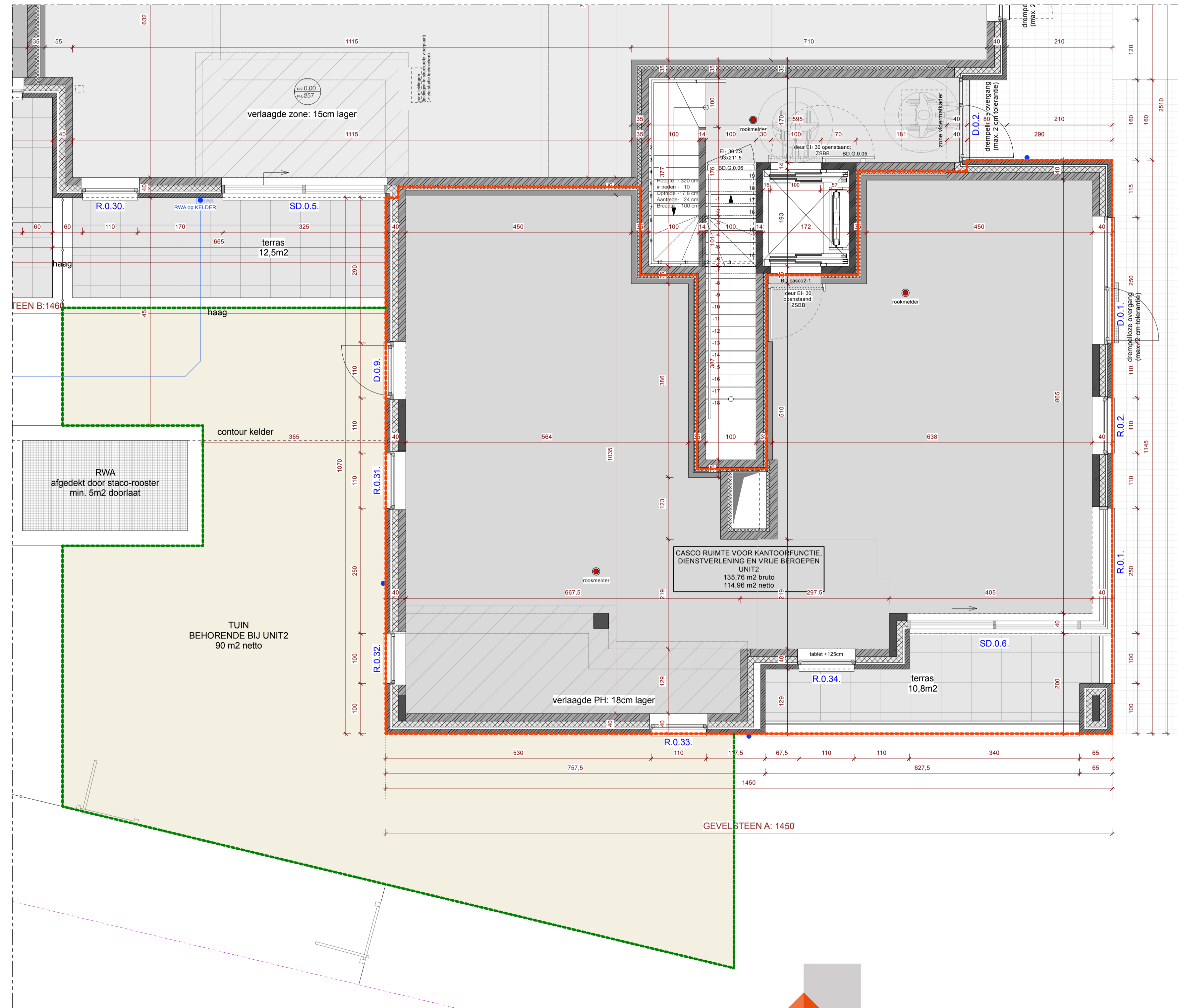
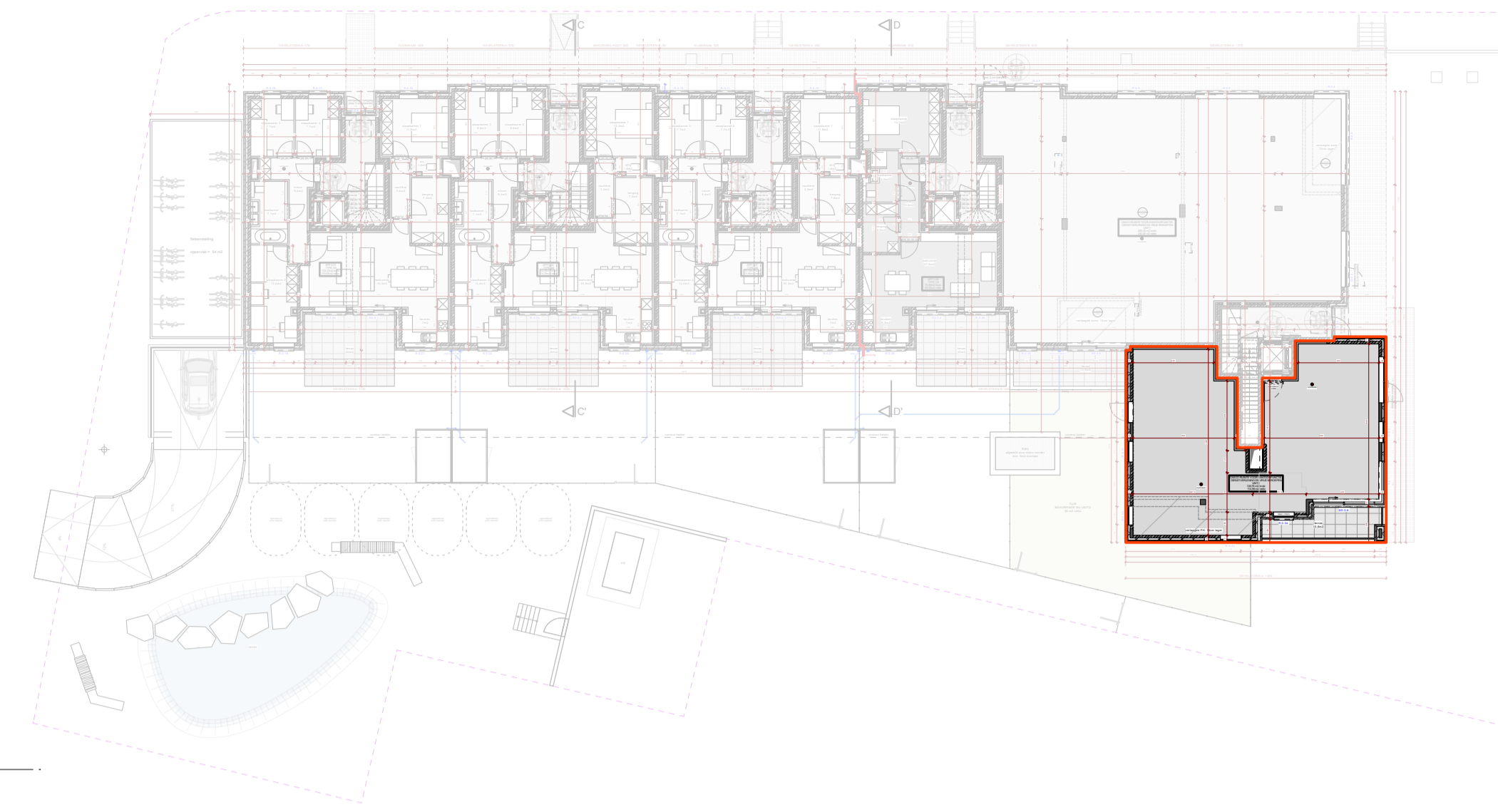
KANTOOR
Kempische Kaai 69 bus 2
3500 Hasselt

CONTACT
T 011 72 49 29
M info@zesth.be

OVERZICHTSPLAN NIV. 00

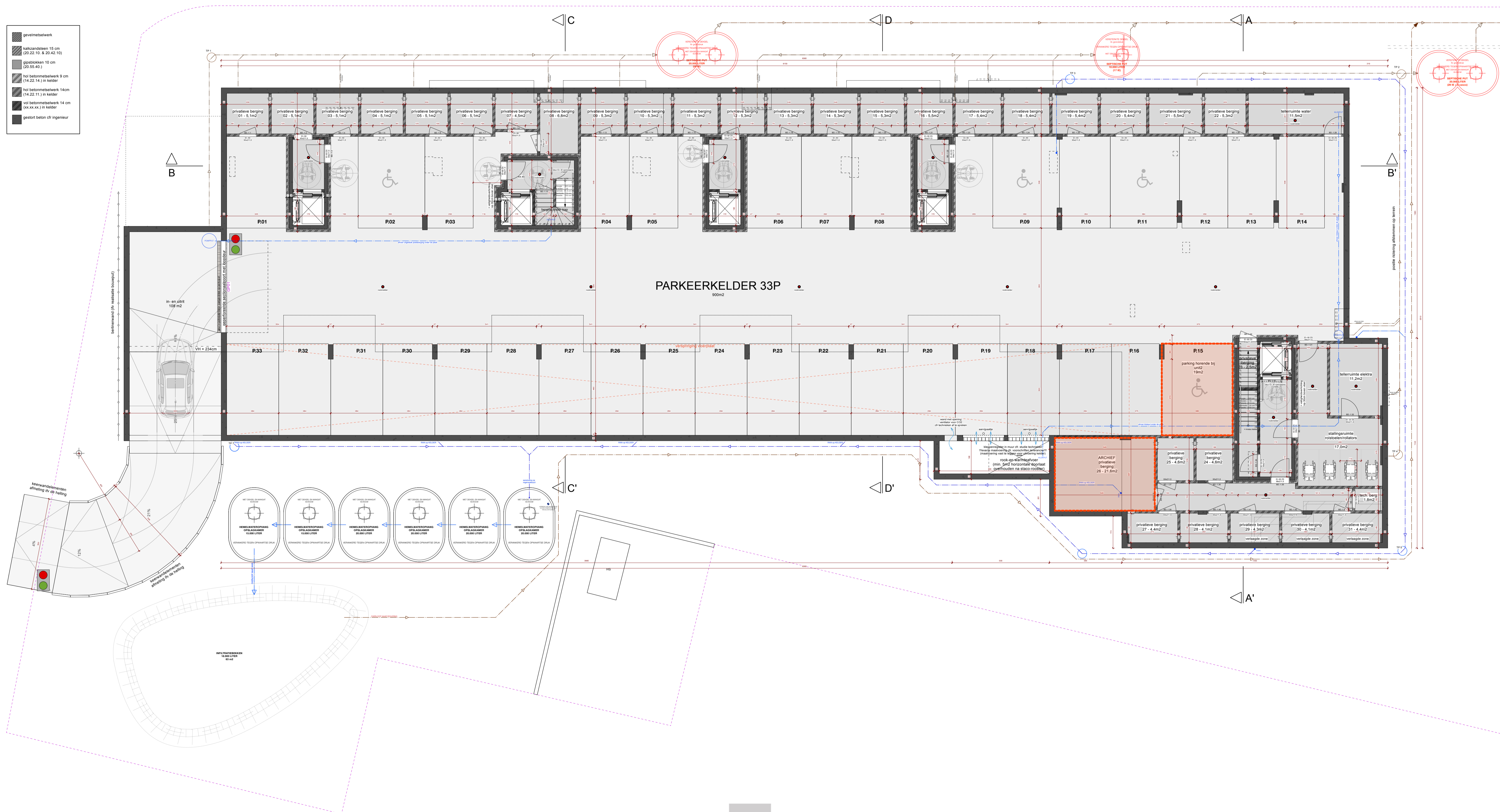
- gevelmetselwerk
- kalkzandsteen 15 cm (20.22.10, 8.20.42, 10)
- gevelblokken 10 cm (20.55.40)
- hol betonmetselwerk 9 cm (14.22.14) in kelder
- hol betonmetselwerk 14 cm (14.22.11) in kelder
- hol betonmetselwerk 14 cm (xx.xx.xx) in kelder
- gestort beton cfr ingenieur



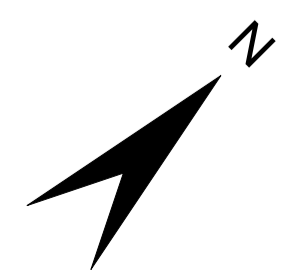


OVERZICHTSPLAN NIV. -01

- gewijfdebeton
- kalkzandsteen 15 cm (20.22.15, 8.20.42.15)
- gipsblokken 10 cm (20.55.40.)
- hol betonwielwerk 9 cm (14.22.14.) in kelder
- hol betonwielwerk 14cm (14.22.11.) in kelder
- hol betonwielwerk 14 cm (xx.xx.xx.) in kelder
- gestort beton cfr ingenieur



0 1 3 5 10m



RECHTER ZIJGEVEL (Verbindingsweg)



ACHTERGEVEL (Lidl-zijde)



